

KENTALROOF-A CONFORT 500 T4 1,5kW (27950491AL)

GENERAL DATA



ROOF FAN WITH FOLDING SYSTEM AND ALUMINIUM COWL

MANUFACTURING FEATURES:

- Protection cowl made of anticorrosive treated aluminum easily removable for motor and impeller maintenance thanks to the integrated folding system.
- The design of the cowl with a **rounded shape** is specific to minimize the risk of water ingress due to rain.
- Equipped with a **hinged system** to open the motor-impeller set. This system allows easy maintenance and cleaning of the set without the need to disassemble the entire structure. The opening is possible in 2 inclinations: approximately 45° and 90°, as required by the intervention.
- Structure in anticorrosive galvanized steel and support frame for adaptation to the roof with anti-bird protection grid.
- High-performance, backward-curved blade (reaction) impellers designed to work without scroll. Self-cleaning system, built in galvanized steel treated with anti-corrosion.
- Standard asynchronous squirrel cage motor with IP-55 protection and Class F insulation. Standard voltages 230V 50Hz for single phase motors, 230/400V 50Hz for three phase motors up to 4kW & 400/690V 50Hz for higher powers and 400V 50Hz for 2 speed motors.

APPLICATIONS

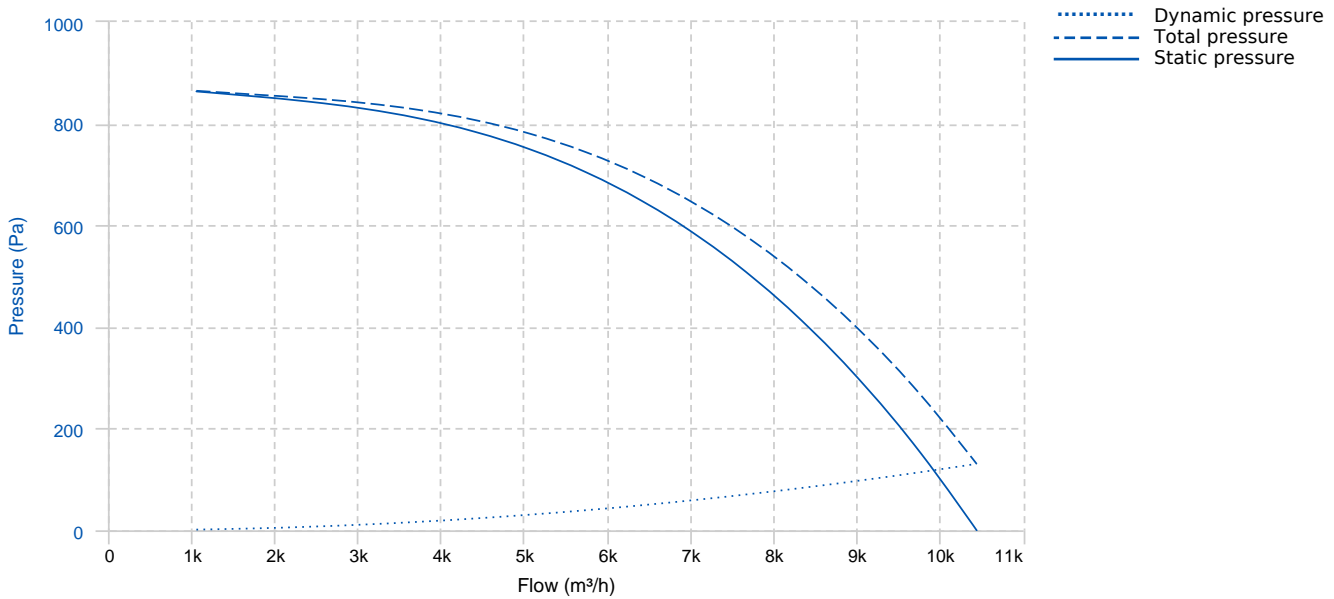
Designed for deck or roof mounting, they are indicated for:

- Smoke extraction.
- Air renewal in all types of buildings and industries.
- Maximum continuous working temperature: transported air 80°C, ambient 60°C to -25°C in three-phase motors.

UNDER REQUEST

- Special voltages.
- Special construction for moving air at 120°C. Serie:

PERFORMANCE CURVE

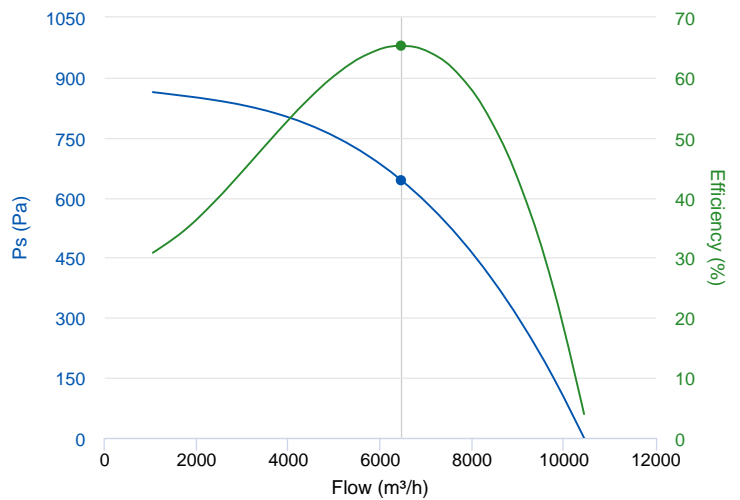


TECHNICAL DATA

Fan							
RPM	1450	Approx. weight	96 kg	Max. Flow	10430 m³/h		
Motor							
Power	1,5 kW	RPM	1450	I max. (230V)	5,67 A	I max. (400V)	3,26 A
Size	90L	Approx. weight	22 kg	Efficiency (%)	85.3 %	FP	0.8

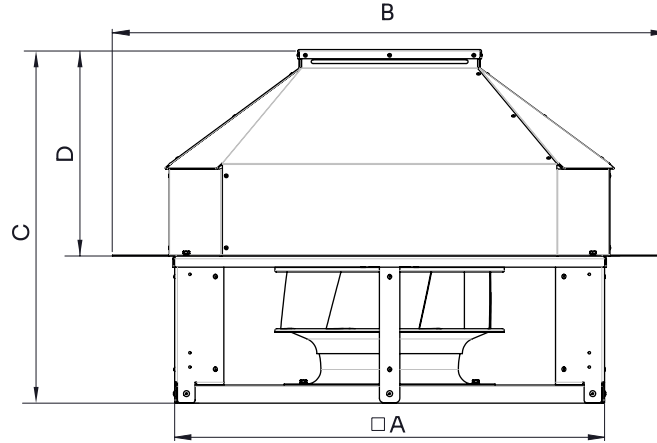
ERP DATA

Fan data sheet		
Fan type	Unit for non-residential ventilation (LOT 6)	
Typology	Unidirectional	
reports.other	None	
Type of driver	None	
Motor power (kW)	1.5	
	Fan values	ERP Requirements 2018
Max. efficiency (%)	65.27	45.85
Effic. Heat recovery (%)	-	
Pabs (kW)	1.861	
Flow (m³/h)	6464.83	
Static pressure (Pa)	642.69	
Speed (m/s)	9.15	



	Fan values	ERP Requirements 2018
SFP (W/m ³ /s)	1036.33	

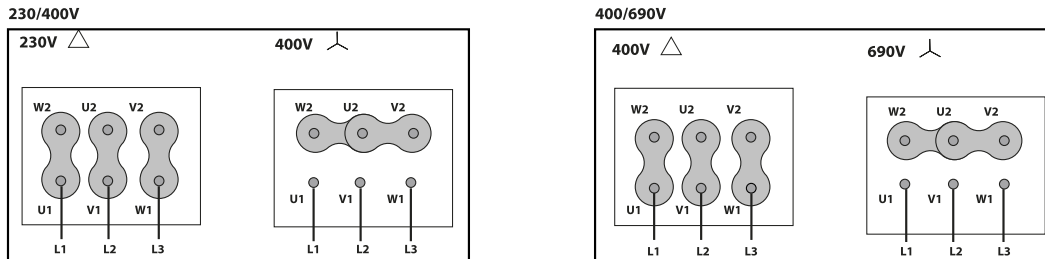
DIMENSIONS



Dimensions (mm)

A (int)	936	B	1220	C	812	D	470
---------	-----	---	------	---	-----	---	-----

WIRING DIAGRAM



ACCESSORIES



SAFETY SWITCH
INT 25 3P A
REF: INT253PA



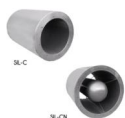
CONNECTION FLANGE
AC 500
REF: 960003214



**CIRCULAR SILENCER
SIL-C 500/500
REF: 960050050**



**CIRCULAR SILENCER
SIL-C 500/1000
REF: 960050100**



**CIRCULAR SILENCER
SIL-CN 500/750
REF: 961050075**



**CIRCULAR-CIRCULAR ANTI-VIBRATION FLANGE
BAD 13 (Ø500)
REF: 960003463**



**CIRCULAR SILENCER
SIL-C 500/750
REF: 960050075**



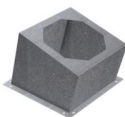
**CIRCULAR SILENCER
SIL-CN 500/500
REF: 961050050**



**CIRCULAR SILENCER
SIL-CN 500/1000
REF: 961050100**



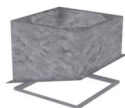
**FREQUENCY SPEED CONTROLLER
SFC 230 I 7A *
REF: SFC230I007**



**INCLINED ROOF FAN SUPPORT
BTI 915
REF: A-50870915XX**



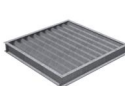
**KENTALROOF VERTICAL DISCHARGE
KV KENTALROOF 500
REF: KVKNTR500**



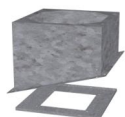
**BTI + AMC MOUNTED
BTI+AMC 915
REF: BTIAMC915XX**



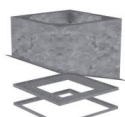
**FREQUENCY SPEED CONTROLLER
SFC 400 III 3,6A *
REF: SFC400III4**



**DEPRESSION DAMPER (HORIZONTAL or
VERTICAL PLACEMENT)
CMP-HUT 500x510
REF: CMPHUT5051**

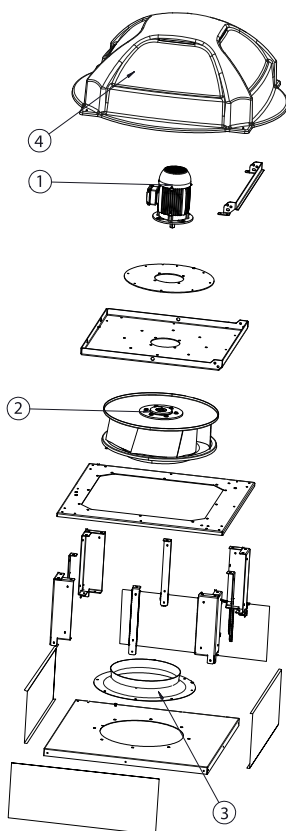


**BTI + ACMP MOUNTED
BTI+ACMP 915
REF: BTIACMP915XX**



**BTI + ACMP+AMC MOUNTED
BTI+ACMP+AMC 915
REF: BTIACMPAMC915XX**

SPARE PARTS



	Code	Model	Qty
1	721001156	MOTOR 1,5kW T4 B5 230/400V	x1
2	R-R63D1L500-24	IMPELLER R63D1L500x140x24 LG	x1
3	R-BAD500PK1	INLET CONE ED11P 500	x1
4	R-279564478A	ROOF COWL KENTALROOF-A 450-500-560	x1